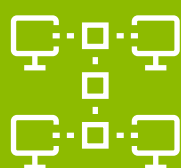


time

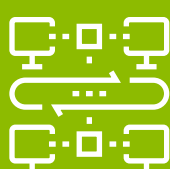
How are the *Fortune* 100 accelerating the time to value of their software products?



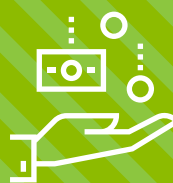
By **architecting** their value stream around flow



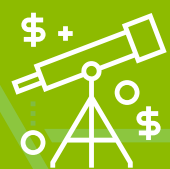
By strategically and incrementally stitching together a series of common and critical **integration patterns**



Integration patterns are common and critical interactions between the specialists and the tools they use to help plan, build and deliver **software at scale**



Through automation, these patterns eradicate waste, remove inefficiencies and accelerate flow between key stages of the value stream to **meet business outcomes**



With a connected end-to-end value stream, you can make your invisible workflow visible, traceable and measurable through **Flow Metrics**

Download the e-book to learn more about the key integration patterns by used by leading organizations today to identify bottlenecks and opportunities to optimize their software delivery value stream

